

THANK YOU

Thank you for purchasing a VP6450 Presentation Pilot Pro. We know you had other choices and we appreciate that you chose Interlink Electronics by SMK-Link for your wireless needs. So that we may better serve you in the future, please register online at www.smklink.com/register.

WARRANTY

One Year, Limited Warranty

SUPPORT

SMK-Link Electronics Corporation
3601-B Calle Tecate
Camarillo, CA 93012

TEL: (888) 696-3500
FAX: (805) 987-6665

FCC Certification

This device complies with Part 15 of the FCC Rules.

Operation is subject to the following two conditions: (1) This device may not cause harmful interference, and (2) This device must accept any interference received, including interference that may cause undesired operation.

This equipment has been tested and found to comply with the limits for a CLASS B digital device, pursuant to Part 15 of the FCC rules. These limits are designed to provide reasonable protection against harmful interference when the equipment is operated in a residential installation. This equipment generates, uses, can radiate radio frequency energy and if not installed and used in accordance with the instruction guide, may cause harmful interference to radio communications. However, there is no guarantee that this radio interference will not occur in a particular installation. If this equipment does cause harmful interference to radio or television reception, which can be determined by turning the equipment on and off, the user is encouraged to try to correct the interference by one or more of the following measures:

Re-orient or relocate the receiving antenna.

Increase the separation between the equipment and the receiver.

Consult the dealer or an experienced Radio-TV technician for help.

Notice: Any changes or modifications not expressly approved by the party responsible for compliance could void the user's authority to operate the equipment. Extension cables are not recommended, if used, they must be shielded in order to comply with the emission limits.

IC Certification

The term "IC" before the certification/registration number only signifies that the Industry Canada technical specifications were met.

Declaration of conformity

Manufacturer: SMK-Link Electronics Corporation
3601-B Calle Tecate
Camarillo, CA 93012

Hereby, SMK-Link. declares that the VP6450 is in compliance with the essential requirements and other relevant provisions of Directive 1999/5/EC.

EMC/EMI/Safety Standards:

EN 300 440-2 V1.1.1 (2001-09)
EN 301 489-1 V1.4.1 (2002-08)
EN 301 489-3 V1.4.1 (2002-08)
EN 60825-1 (1994, A11:1996, A2:2001)



Users Manual

VP6450

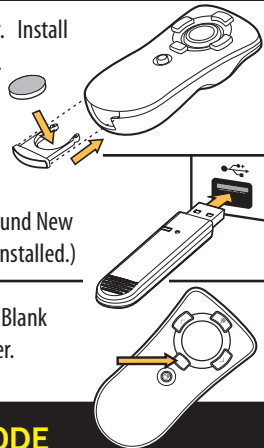


Presentation
Pilot[™] Pro

INTERLINK
ELECTRONICS

FIRST USE

1. Remove the receiver from the remote's receiver bay. Install battery in the battery compartment and reinsert it. (When the receiver is in the receiver bay, it automatically turns the remote off to save power.)
2. With the computer turned on, plug the receiver into a free USB port. (If the computer displays a "Found New Hardware" dialog box, click Next until the driver is installed.)
3. Initialize the Presentation Pilot Pro by pressing the Blank button within 10 minutes of connecting the receiver.



CHANGING THE BLANK KEY CODE

In certain languages a different key code may be needed to blank the screen during a presentation. Three key codes are provided for the various presentation programs. To change between the codes:

- Insert the receiver into a USB port.
- Use a paper clip to press and release the recessed button on the receiver.
- The LED on the receiver will turn orange.
- Start a slide show and test the Blank screen feature.



SETTING UP THE PRESENTATION PILOT PRO

Your presentation remote comes set up from the factory. In most situations no adjustments are needed; however, if you have many remotes or another device which is causing interference, complete these steps to avoid interference.

TRAINING THE RECEIVER

1. To train the receiver to accept the digital code from the remote, remove the USB receiver from the USB port and reconnect it after a few seconds.
2. Press and hold the Next button (the right arrow) for 10 seconds until the red light on the remote turns back on. The LED on the receiver should turn from flashing green to solid green then back to flashing green.

CHANGING CHANNELS

1. Remove the battery from the remote.
2. Replace the battery and hold down the Previous button (the left arrow) for 10 seconds.
3. The LED on the remote will blink the number of the current channel. Each time you press the Previous button it increases the channel by one.
4. Once you are on channel 4, increasing the channel will move it back to channel 1.
5. The LED will blink rapidly the number of the current channel.
6. Press the Next button (the right arrow) to confirm the channel.
7. Train the receiver again using the steps listed in "Training the Receiver."

PRESENTATION PILOT PRO CONTROLS

